

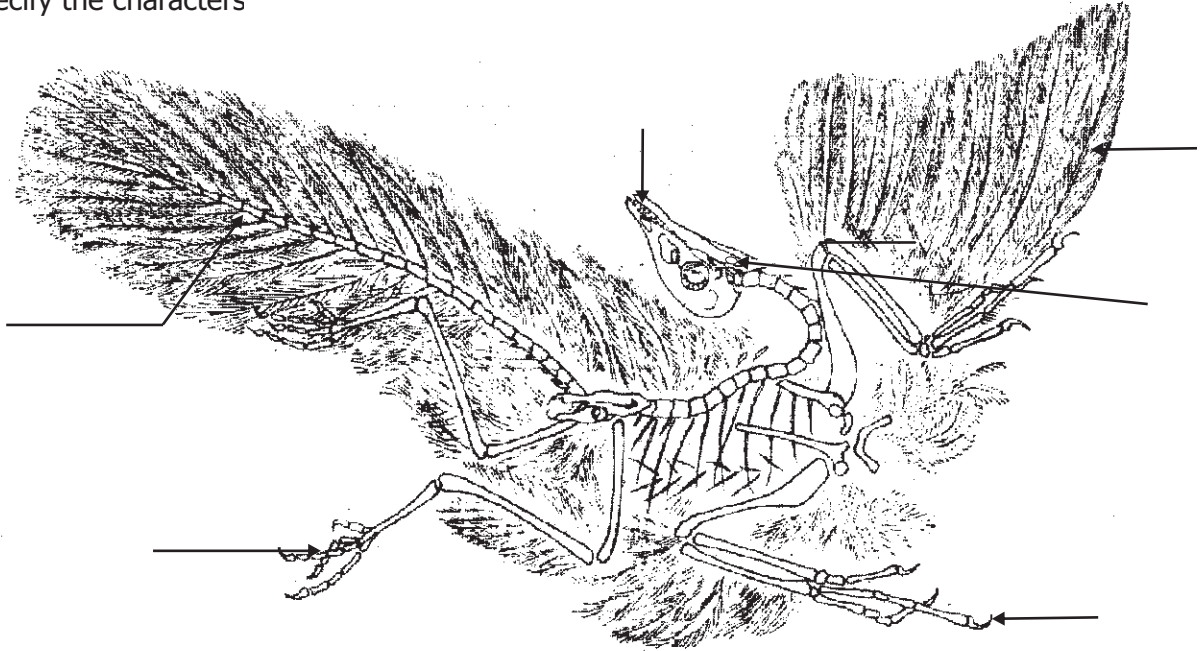
Archaeopteryx

Paleontology Gallery

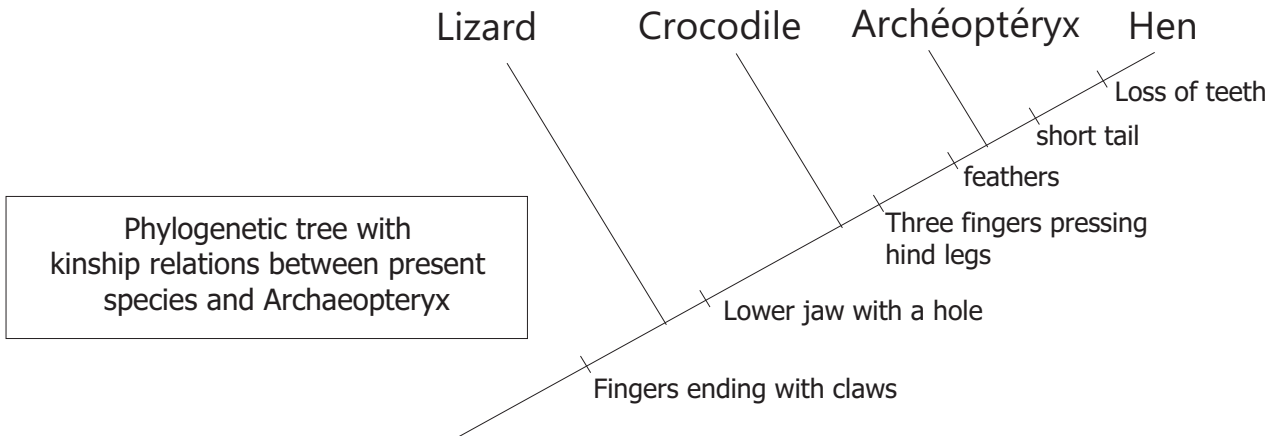
1- Found in the gallery the fossil Archaeopteryx, this animal lived in the Jurassic to Cretaceous.

2- Colour the Archaeopteryx, only the parts of the fossil you can really see.

3- with the informations of the phylogenetic tree, fill in the legends of the diagram below and specify the characters



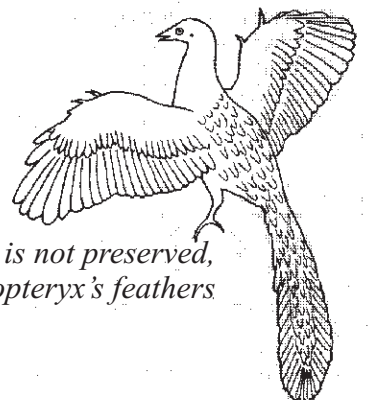
Interpretation of the imprint of Archaeopteryx



4- Always on the pattern of the footprint fossil, surround the characters that bring the Archaeopteryx and the Hen in a same group.

Highlight innovations exclusive to the group of Hen.

5- In your opinion, can we say that Archaeopteryx is the first bird? Justify.



During fossilization, the color of feathers is not preserved, Imagine different colours for the Archeopteryx's feathers